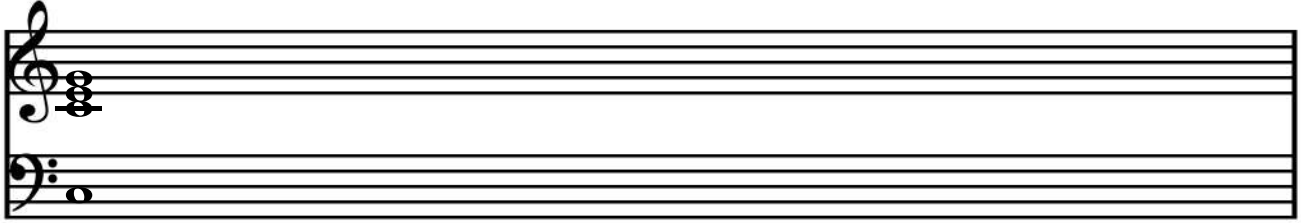


Kadenzen

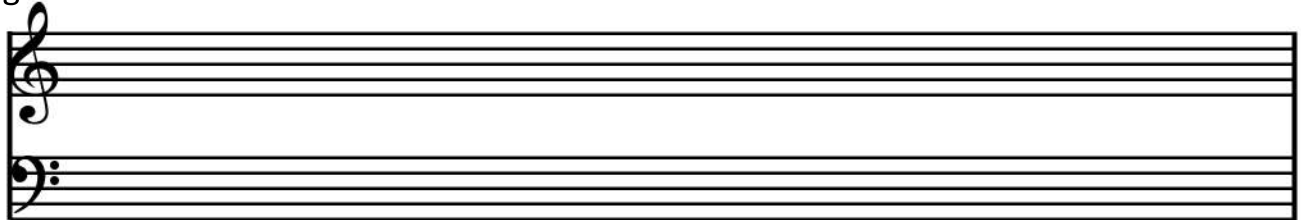
(Die Lösungen beziehen sich auf den Beginn in Quintlage)

C - Dur



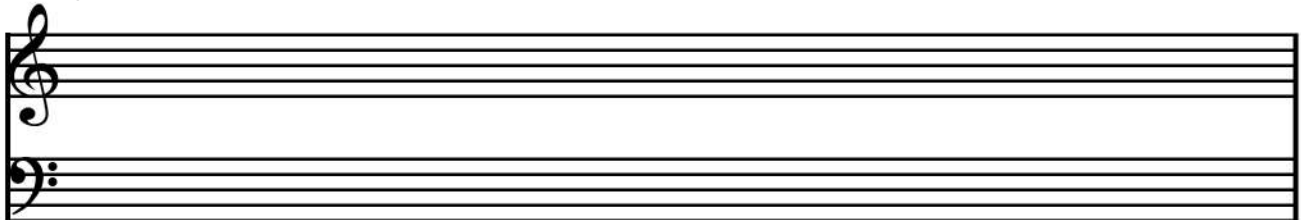
T S D T

g - Moll



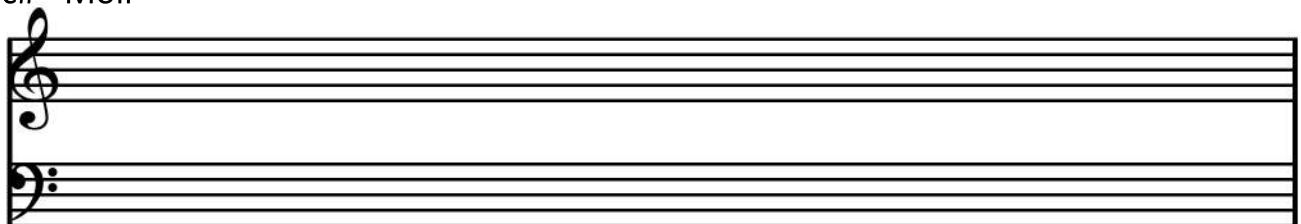
t s D tG s D t

E - Dur



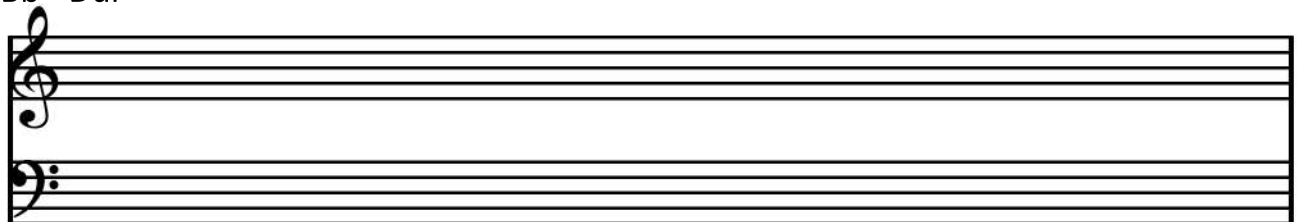
T sP D D7 T

c# - Moll



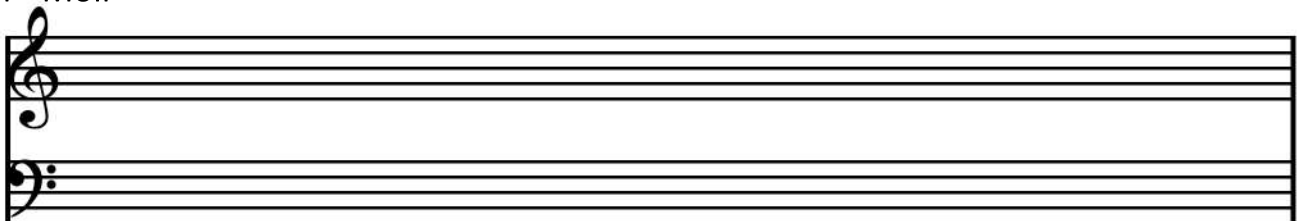
t s6 D7 sP D D7 t

Bb - Dur



T Tg S Dp D T

f - Moll



t s D tP s D t

Kadenzen - Lösungen

(Die Lösungen beziehen sich auf den Beginn in Quintlage)

C - Dur

Musical notation for C major cadence. The treble clef contains four chords: C major, F major, C major, and F major. The bass clef contains four notes: C, F, C, F.

T S D T

g - Moll

Musical notation for g minor cadence. The treble clef contains seven chords: G minor, Bb major, D minor, Bb major, G minor, Bb major, and G minor. The bass clef contains seven notes: G, Bb, D, G, Bb, D, G.

t s D tG s D t

E - Dur

Musical notation for E major cadence. The treble clef contains five chords: E major, G# major, E major, G# major, and E major. The bass clef contains five notes: E, G#, E, G#, E.

T sP D D7 T

c# - Moll

Musical notation for c# minor cadence. The treble clef contains seven chords: c# minor, E major, G# major, E major, G# major, E major, and c# minor. The bass clef contains seven notes: c#, E, G#, E, G#, E, c#.

t s6 D7 sP D D7 t

Bb - Dur

Musical notation for Bb major cadence. The treble clef contains six chords: Bb major, G major, Bb major, G major, Bb major, and G major. The bass clef contains six notes: Bb, G, Bb, G, Bb, G.

T Tg S Dp D T

f - Moll

Musical notation for f minor cadence. The treble clef contains seven chords: f minor, Ab major, D minor, Ab major, f minor, Ab major, and f minor. The bass clef contains seven notes: f, Ab, D, f, Ab, D, f.

t s D tP s D t